

INTRODUCTIONS

1. Power module incorporates an IEC connector, a fuse holder with optional power on/off switch and voltage selector switch, plus an EMI filter all-in-one single, easy-to-install unit.
2. Fuse holder designed for one IEC 5x20mm fuse. Safety interlock prevents fuse removal with line plug inserted.
3. AE1/3/4/5: UL, CSA
AE2: UL, CSA, VDE

SPECIFICATIONS

1. Maximum leakage current each
line-to-ground @ 115VAC 60Hz: 0.25mA
@ 250VAC 50Hz: 0.45mA
2. Hipot rating (one minute)
line-to-ground: 2250VDC
line-to-line: 1450VDC
3. Operating frequency: 50/60Hz
4. Rated voltage: 115/250VAC

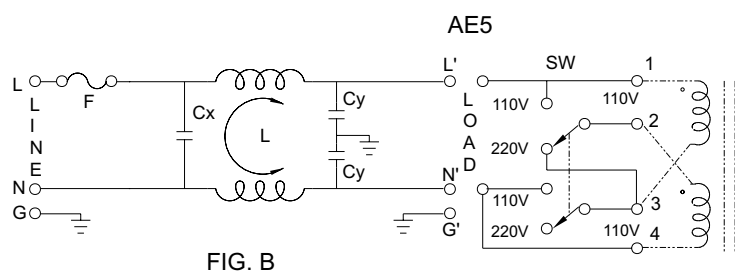
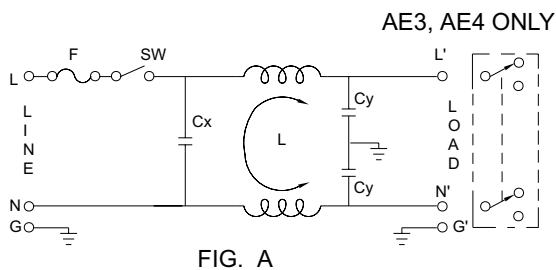
MINIMUM INSERTION LOSS IN dB

COMMON MODE (L-G) IN 50 OHM SYSTEM						
CURRENT RATING	FREQUENCY-MHz					
	.15	.50	1.0	5.0	10	30
3A	5	15	20	25	25	30
6A	10	20	22	35	38	45
10A	5	15	20	37	45	50

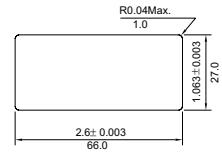
TYPE & RATED CURRENT

DELTA PART NO.	03AE1 06AE1 10AE1	03AE2 06AE2 10AE2	03AE3 06AE3	03AE4 06AE4	03AE5 06AE5
IEC CONNECTOR	△	△	△	△	△
FUSE HOLDER	△	△	△	△	△
POWER SWITCH	-	SP ¹	SP ¹	-	-
VOLTAGE SELECTOR SW	-	-	REAR ²	REAR ²	FRONT ³
ELECTRICAL SCHEMATIC	FIG. A	FIG. A	FIG. A	FIG. A	FIG. B

ELECTRICAL SCHEMATIC



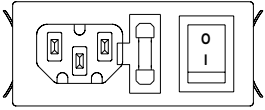
- AE1, AE4 without power SW
L1: 2.6mH (3A)
L1: 0.5mH (6A)
L1: 0.2mH (10A)
Cx: 0.015uF
Cy: 3300pF



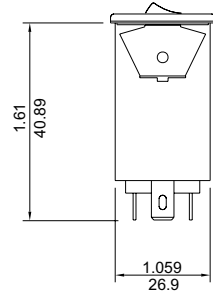
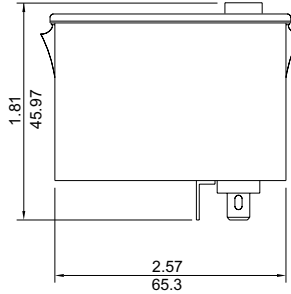
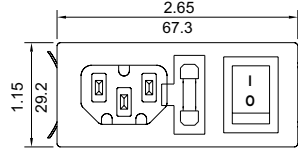
- Suggested thickness of mounting panel is from 0.04 to 0.07 inch
- Suggest mounting cutout

MECHANICAL CONSTRUCTION

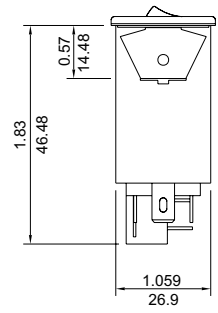
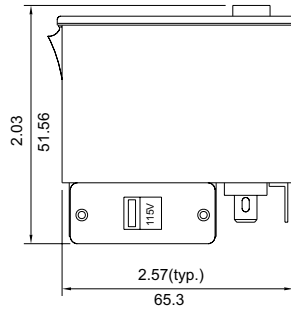
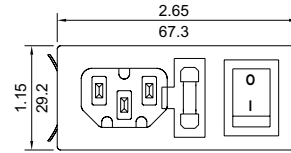
* Optional ON/OFF switch direction



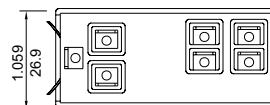
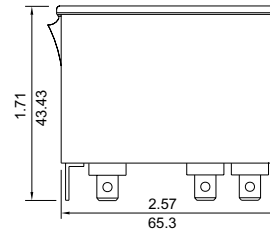
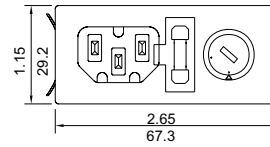
AE1 (without power switch)
AE2



AE3
AE4 (without power switch)



AE5



UNIT: $\frac{\text{INCH}}{\text{mm}}$