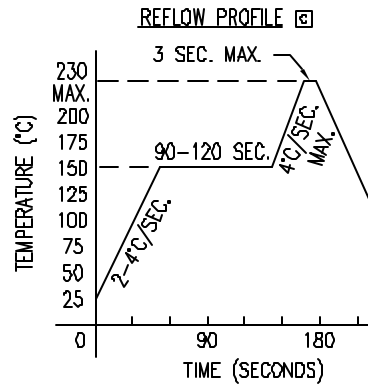
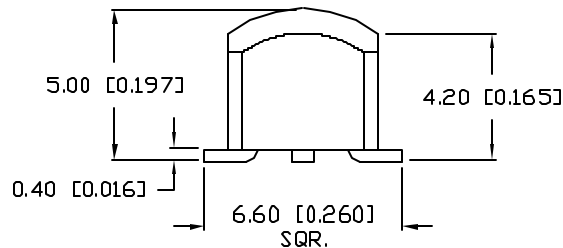
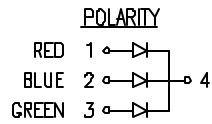
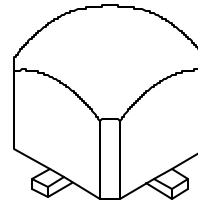
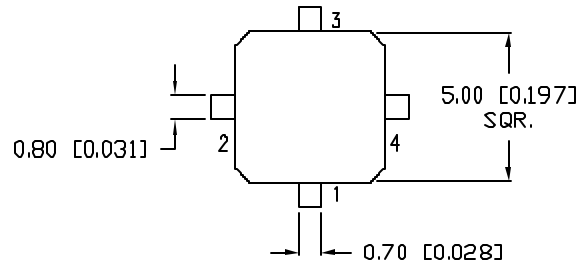


| REV. | E.C.N. NUMBER AND REVISION COMMENTS | DATE |
|------|-------------------------------------|---------|
| A | E.C.N. #10770. | 7.23.01 |
| B | E.C.N. #10789. | 9.27.01 |
| C | E.C.N. #10966 | 3.11.03 |



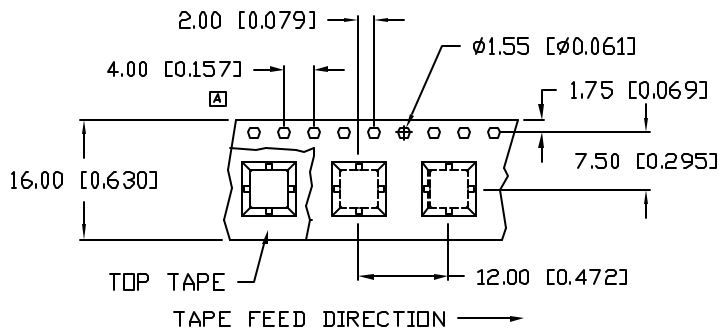
ELECTRO-OPTICAL CHARACTERISTICS $T_A=25^\circ\text{C}$ $I_f=20\text{mA}$

| PARAMETER | RED | GREEN | BLUE | UNITS | TEST COND |
|---|-----|-------|------|----------------|----------------------|
| PEAK WAVELENGTH | 660 | 565 | 430 | nm | |
| FORWARD VOLTAGE (TYP.) | 1.7 | 2.2 | 4.5 | V _f | |
| FORWARD VOLTAGE (MAX.) | 2.2 | 2.6 | 5.5 | V _f | |
| REVERSE VOLTAGE | 5.0 | 5.0 | 5.0 | V _r | $I_f=100\mu\text{A}$ |
| AXIAL INTENSITY | 9 | 9 | 8 | mcd | $I_f=20\text{mA}$ |
| VIEWING ANGLE | 120 | 120 | 120 | 2x theta | |
| LED POSITION: | 1 | 2 | 3 | | |
| EPOXY LENS FINISH: MILKY WHITE DIFFUSED | | | | | |

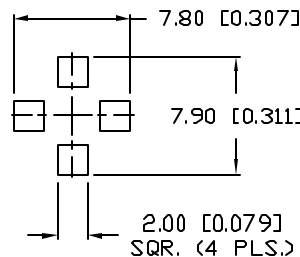
LIMITS OF SAFE OPERATION AT 25°C PER CHIP

| PARAMETER | COLORS | MAX | UNITS |
|--------------------------|---------|-------------|-------|
| PEAK FORWARD CURRENT* | (R/G/B) | 150/150/200 | mA |
| STEADY CURRENT | (R/G/B) | 30/25/30 | mA |
| POWER DISSIPATION | | 105 | mW |
| DERATE FROM 25°C | | -1.2 | mW/°C |
| OPERATING, STORAGE TEMP. | | -40 TO +85 | °C |

* $t < 10\mu\text{s}$



RECOMMENDED SOLDER PAD LAYOUT



NOTES:

1. THE CATHODE IS ORIENTED TOWARDS THE TAPE SPROCKET HOLE.
2. 500 PCS. PER REEL.

*UNLESS OTHERWISE SPECIFIED TOLERANCES PER DECIMAL PRECISION ARE: X=±1 (±0.039), XX=±0.5 (±0.020), XXX=±0.25 (±0.010), XXXX=±0.127 (±0.005), LEAD SIZE=±0.05 (±0.002), LEAD LENGTH=±0.75 (±0.030), MIN.= +DECIMAL PRECISION -0.00, MAX.= +0.00 -DECIMAL PRECISION

| REV. | PART NUMBER |
|------|--------------------|
| B | SML-LXL5550SRSGSBW |

T-5mm (T-1 3/4) SURFACE MOUNT LED,
5mm SQUARE WITH DOME, 4 LEADED,
FULL RGB COLOR, MILKY WHITE DIFFUSED LENS.

CONFIDENTIAL INFORMATION
THE INFORMATION CONTAINED IN THIS DOCUMENT IS THE PROPERTY OF LUMEX INC. EXCEPT AS SPECIFICALLY AUTHORIZED IN WRITING BY LUMEX INC., THE HOLDER OF THIS DOCUMENT SHALL KEEP ALL INFORMATION CONTAINED HEREIN CONFIDENTIAL AND SHALL PROTECT SAME IN WHOLE OR IN PART FROM DISCLOSURE AND DISSEMINATION TO ALL THIRD PARTIES.

RELIABILITY NOTE
OUR MANY YEARS OF EXPERIENCE DATA ACCUMULATION INDICATE THAT SOLDER HEAT IS A MAJOR CAUSE OF EARLY AND FUTURE FAILURE. PLEASE PAY ATTENTION TO YOUR SOLDERING PROCESS.



290 E. HELEN ROAD
PALATINE, IL 60067-6976
PHONE: +1.847.359.2790
US WEB: www.lumex.com
TW WEB: www.lumex.com.tw

| DRAWN BY: | CHECKED BY: | APPROVED BY: | DATE: |
|-----------|-------------|--------------|--------------|
| BC | | | 1.17.01 |
| | | | PAGE: 1 OF 1 |
| | | | SCALE: N/A |