

THIS DRAWING IS UNPUBLISHED.

RELEASED FOR PUBLICATION

© COPYRIGHT 19

BY AMP INCORPORATED. ALL INTERNATIONAL RIGHTS RESERVED.

.19

Loc AF DIST 50

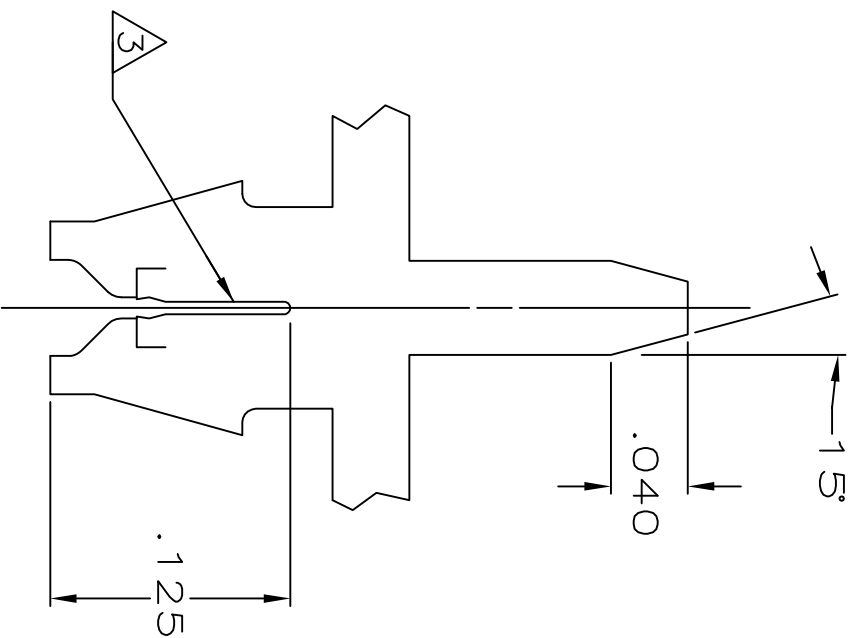
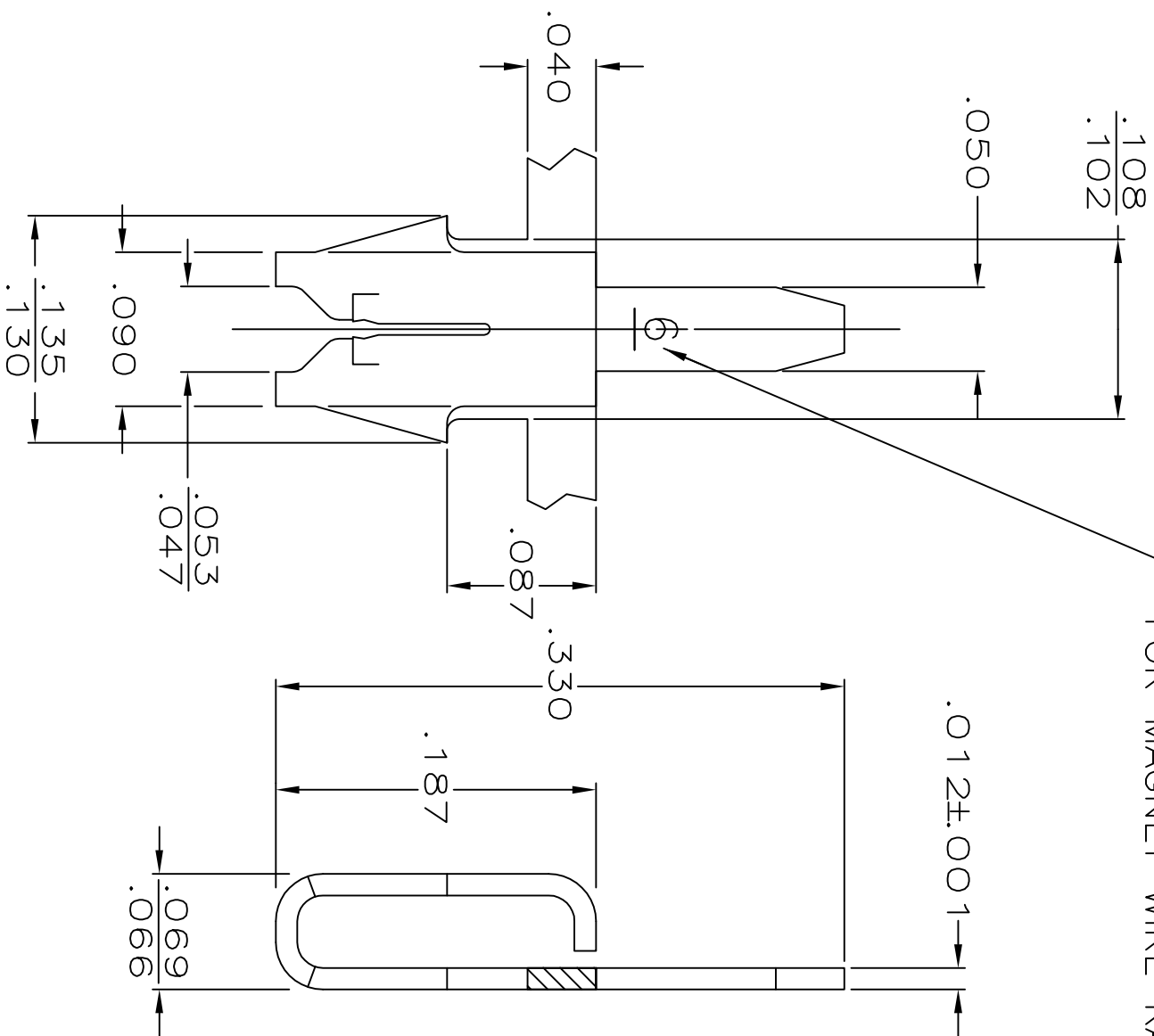
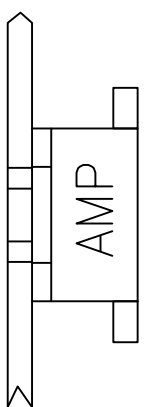
REV	DATE	APPD
1	2MAY96	RG/NN
2	17FEB13	CX-LL

REVISIONS

DESCRIPTION

REV	DATE	APPD
1	2MAY96	RG/NN
2	17FEB13	CX-LL

IDENTIFICATION NUMBER FOR MAGNET WIRE RANGE



- 1 MAG-MATE CAVITY SPECIFICATION.
- 2 CONTINUOUS STRIP ON REELS WITH TERMINALS LOCATED ON .200 CENTERS.
- 3 SLOT ACCEPTS #30-#28 AWG COPPER MAGNET WIRE.
- 4 REELED FOR APPLICATION THROUGH MAG-MATE INSERTION MACHINE
- 5 REELED FOR INSERTION INTO PRINTED CIRCUIT BOARD
- 6 0.002032 [.000080] MIN TIN PER MIL-T-10727 OVER 0.00127 [.000050] MIN NICKEL PER QQ-N-290

OBSOLETE	62430-2
	62430-1

REELING

PART NO

DO NOT SCALE PRINT. UNLESS SPECIFIED DIMENSIONS IN INCHES TOLERANCES ON: 1 PLC DEC ± .010 2 PLC DEC ± .010 3 PLC DEC ± .010 ANGLES

MATERIAL #4 HARD BRASS

FINISH



DR 11/21/88 M.S. FEHER

CHK 11/27/88 JR RUTH

APPD 11/28/88 NELSON E. NEFF

APPD 11/28/88 C.G. ATHERTON

PRODUCT SPEC

APPLICATION SPEC 114-2069

WEIGHT



AMP INCORPORATED Harrisburg, Pa. 17105

TERMINAL, POSTED, MAG-MATE™

SIZE B FSCM NO 00779 DRAWING NO 62430

SCALE 10:1 SHEET 1 OF 1

CUSTOMER DRAWING